

# INSTRUCTION SHEET

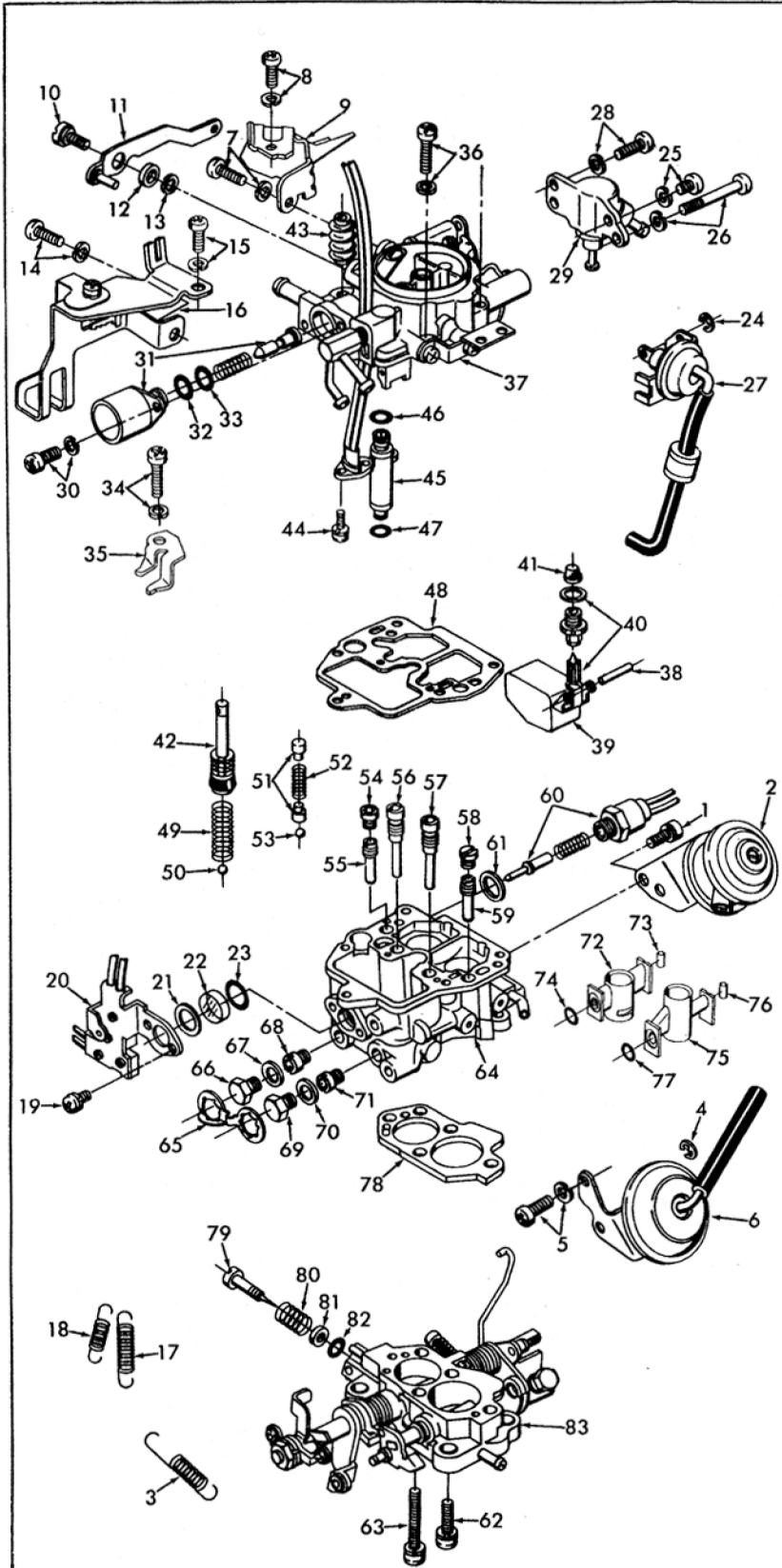
## OFF VEHICLE CARBURETOR SERVICE

### HITACHI MODEL DFB 306

GF10404

3 CYL. SPRINT FED. FEED BACK A/T  
4 CYL. SUZUKI

**GENERAL EXPLODED VIEW**  
THE GENERAL DESIGN AND PARTS SHOWN WILL VARY TO  
INDIVIDUAL UNITS COVERED ON THIS INSTRUCTION SHEET



#### DISASSEMBLY

USE THE EXPLODED VIEW AS A GUIDE. THE NUMERICAL SEQUENCE MAY GENERALLY BE FOLLOWED TO DISASSEMBLE UNIT FAR ENOUGH TO PERMIT CLEANING AND INSPECTION. REMOVE WIRES FROM CARBURETOR HARNESS CONNECTOR USING PROPER TOOL AND IDENTIFY WIRE LOCATION FOR PROPER REASSEMBLY. CAUTION: SOME ORIGINAL SCREWS HAVE LOCK TIGHT APPLIED TO THEM. TAKE EXTRA CARE IN REMOVING THEM. USE PROPER TOOLS. NOTE SIZES OF ALL JETS AND THEIR LOCATION FOR PROPER REASSEMBLY. RECORD SIZES BELOW. TO REMOVE IDLE ADJUSTING NEEDLE PIN, USE A 4 - 4.5MM DRILL AND DRILL OUT PIN OR WORK OUT WITH A PUNCH. BEFORE REMOVING IDLE MIXTURE NEEDLE, TURN IN COUNTING THE NUMBER OF TURNS IT IS FROM THE SEATED POSITION (RECORD).

NOTE: IF VENTURIS ARE REMOVED TO REPLACE O-RING SEALS, CAREFULLY TAP VENTURI FROM THE BOTTOM SIDE UNTIL FREE OF HOUSING. TO REPLACE, INSTALL NEW O-RING. HOLDING VENTURI FIRMLY IN PLACE, TAP LOCKING PIN IN FLUSH WITH HOUSING.

#### NOMENCLATURE

REF. NO.	REF. NO.
1. SCREW & LOCKWASHER (2) - ACTUATOR	40. NEEDLE & SEAT ASSY.
2. ACTUATOR - IDLE UP	41. FILTER SCREEN - NEEDLE SEAT
3. SPRING - AUX. THROTTLE RETURN	42. PUMP ASSY.
4. E-CLIP - SEC. DIAPHRAGM ROD	43. BOOT - PUMP
5. SCREW & LOCKWASHER (2) - SEC. DIAPHRAGM ASSY.	44. SCREW & LOCKWASHER (3) MIXTURE SOLENOID
6. SEC. DIAPHRAGM ASSY.	45. SOLENOID ASSY. MIXTURE CONTROL
7. SCREW & LOCKWASHER - BRACKET	46. O-RING - SOLENOID (UPPER)
8. SCREW & LOCKWASHER - BRACKET	47. O-RING - SOLENOID (LOWER)
9. BRACKET - CABLE	48. GASKET - BOWL COVER
10. SCREW - PUMP LEVER	49. SPRING - PUMP RETURN
11. LEVER - PUMP	50. BALL - PUMP INTAKE CHECK
12. WASHER - PUMP LEVER SCREW	51. WEIGHT (2) - PUMP DISC BALL
13. LOCKWASHER - PUMP LEVER SCREW	52. SPRING - PUMP DISC BALL WEIGHT
14. SCREW & LOCKWASHER - BRACKET	53. BALL - PUMP DISCHARGE CHECK
15. SCREW & LOCKWASHER - BRACKET	54. JET - SLOW AIR BLEED
16. BRACKET - TERM HOLDER	55. JET - SLOW
17. SPRING - SWITCH RETURN (LONG)	56. JET - PRI. MAIN AIR BLEED
18. SPRING - SWITCH RETURN (SHORT)	57. JET - SEC. MAIN AIR BLEED
19. SCREW & LOCKWASHER (2) - BRACKET MICRO SWITCH	58. PLUG - SEC. SLOW JET
20. BRACKET & MICRO SWITCH ASSY.	59. JET - SEC. SLOW
21. GASKET - WINDOW LEVEL	60. SOLENOID ASSY. IDLE SHUT-OFF
22. WINDOW - LEVEL GAUGE	61. GASKET - SOLENOID
23. O-RING - WINDOW LEVEL GAUGE	62. SCREW & LOCKWASHER - THROTTLE BODY
24. E-CLIP - CHOKE PULLOFF LINK	63. SCREW & LOCKWASHER (3) THROTTLE BODY
25. SCREW & LOCKWASHER CHOKE PULLOFF	64. BOWL ASSY.
26. SCREW & LOCKWASHER CHOKE PULLOFF	65. RETAINER - PLUG
27. CHOKE PULLOFF ASSY.	66. PLUG - PRI. MAIN JET
28. SCREW & LOCKWASHER (2) THERMO. ELEMENT	67. GASKET - PLUG
29. THERMO. ELEMENT ASSY.	68. JET - PRI. MAIN
30. SCREW & LOCKWASHER (2) BOWL VENT SOLENOID	69. PLUG - SEC. MAIN JET
31. BOWL VENT SOLENOID ASSY.	70. GASKET - PLUG
32. O-RING - BOWL VENT SOLENOID (INNER)	71. JET - SEC. MAIN
33. O-RING - BOWL VENT SOLENOID (OUTER)	72. VENTURI ASSY. - PRI.
34. SCREW & LOCKWASHER FUEL FITTING BRACKET	73. LOCKING PIN - PRI. VENTURI
35. BRACKET - FUEL FITTING	74. O-RING - PRI. VENTURI SEAL
36. SCREW & LOCKWASHER (2) BOWL COVER	75. VENTURI ASSY. - SEC.
37. BOWL COVER ASSY.	76. LOCKING PIN - SEC. VENTURI
38. PIN - FLOAT	77. O-RING - SEC. VENTURI SEAL
39. FLOAT ASSY.	78. GASKET - THROTTLE BODY
	79. NEEDLE - IDLE ADJUSTING
	80. SPRING - IDLE NEEDLE
	81. WASHER - IDLE NEEDLE
	82. SEAL - IDLE NEEDLE
	83. THROTTLE BODY ASSY.

#### CLEANING

CLEANING MUST BE DONE WITH CARBURETOR DISASSEMBLED. CAUTION: DO NOT SOAK. USE A SPRAY TYPE CARBURETOR CLEANER TO CLEAN ALL THE PASSAGES OF THE CARBURETOR. MAKE CERTAIN THE THROTTLE BODY IS FREE OF ALL CARBON DEPOSITS. WASH OFF IN SUITABLE SOLVENT. BLOW OUT ALL PASSAGES IN CASTINGS WITH COMPRESSED AIR AND CHECK CAREFULLY TO INSURE THOROUGH CLEANING OF OBSCURE AREAS. DO NOT USE CLEANING SOLVENTS ON ASSEMBLIES SUCH AS (2), (6), (20), (27), (29), (31), (39), (45), (60) OR PARTS MADE OF RUBBER.

#### REASSEMBLY

REASSEMBLE IN REVERSE ORDER OF DISASSEMBLY. NOTE SPECIAL INSTRUCTIONS AND FOLLOW NUMERICAL OUTLINE IN MAKING ADJUSTMENTS NECESSARY FOR CARBURETOR BEING SERVICED.

#### SPECIAL INSTRUCTIONS

IDLE ADJUSTING NEEDLE (79) - TURN IN UNTIL LIGHTLY SEATED, THEN BACK OUT NUMBER OF TURNS RECORDED ON DISASSEMBLY.

PUMP RETURN SPRING (49) - INSTALL WITH CROSS WIRE TO THE BOTTOM OF PUMP CYLINDER.

O-RING SEALS - LIGHTLY LUBRICATE FOR EASIER INSTALLATION OF SOLENOIDS.

FOLLOW SERVICE MANUAL INSTRUCTIONS TO MAKE FINAL ADJUSTMENTS ON CAR.

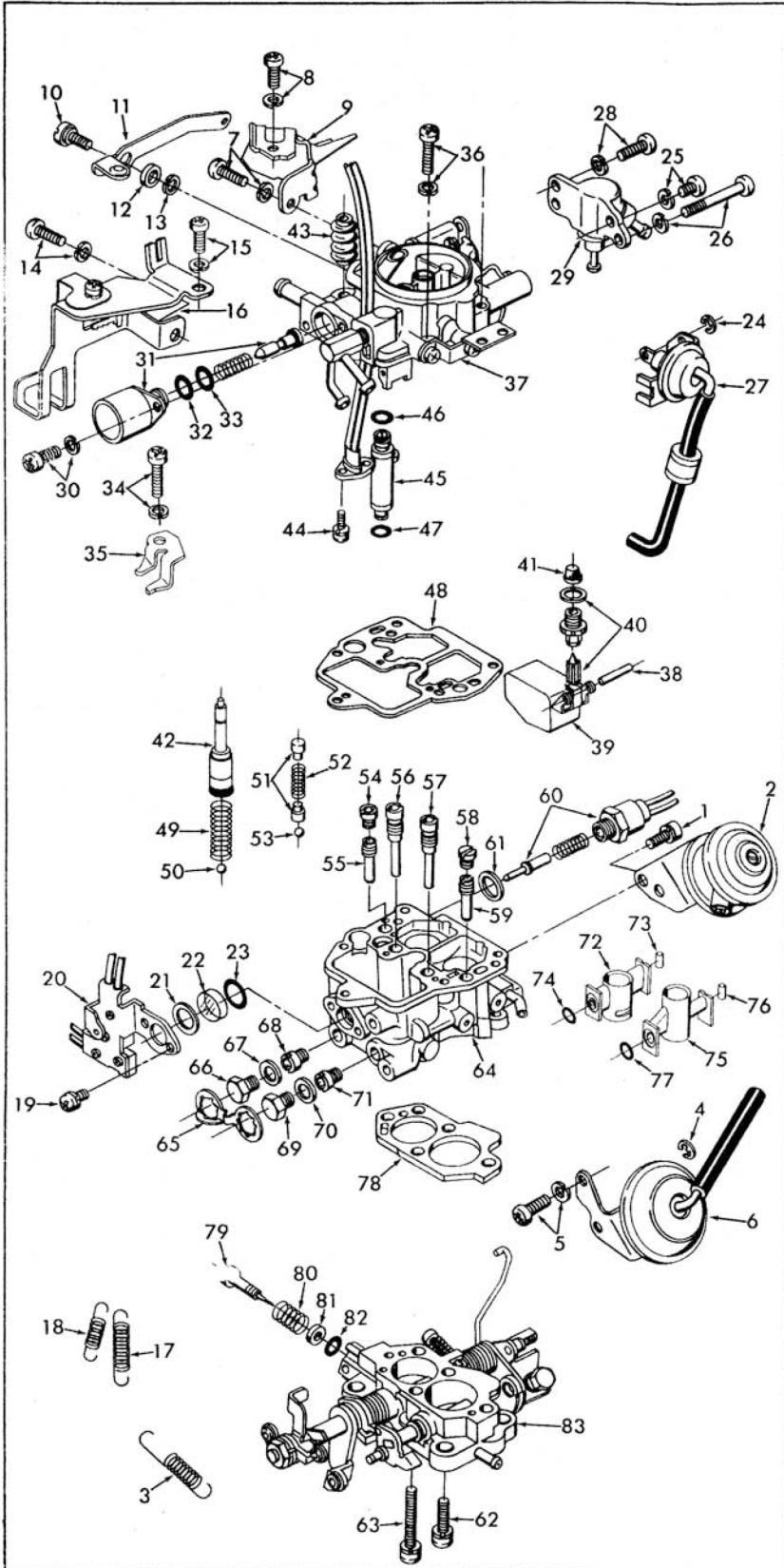
# INSTRUCTION SHEET

## OFF VEHICLE CARBURETOR SERVICE

### HITACHI MODEL DFB 306

3 CYL. SPRINT FED. FEED BACK M/T

**GENERAL EXPLODED VIEW**  
THE GENERAL DESIGN AND PARTS SHOWN WILL VARY TO  
INDIVIDUAL UNITS COVERED ON THIS INSTRUCTION SHEET



#### DISASSEMBLY

USE THE EXPLODED VIEW AS A GUIDE. THE NUMERICAL SEQUENCE MAY GENERALLY BE FOLLOWED TO DISASSEMBLE UNIT FAR ENOUGH TO PERMIT CLEANING AND INSPECTION. REMOVE WIRES FROM CARBURETOR HARNESS CONNECTOR USING PROPER TOOL AND IDENTIFY WIRE LOCATION FOR PROPER REASSEMBLY. CAUTION: SOME ORIGINAL SCREWS HAVE LOCK TIGHT APPLIED TO THEM. TAKE EXTRA CARE IN REMOVING THEM. USE PROPER TOOLS. NOTE SIZES OF ALL JETS AND THEIR LOCATION FOR PROPER REASSEMBLY. RECORD SIZES BELOW. TO REMOVE IDLE ADJUSTING NEEDLE PIN, USE A 4 - 4.5MM DRILL AND DRILL OUT PIN OR WORK OUT WITH A PUNCH. BEFORE REMOVING IDLE MIXTURE NEEDLE, TURN IN COUNTING THE NUMBER OF TURNS IT IS FROM THE SEATED POSITION (RECORD).

NOTE: IF VENTURIS ARE REMOVED TO REPLACE O-RING SEALS, CAREFULLY TAP VENTURI FROM THE BOTTOM SIDE UNTIL FREE OF HOUSING. TO REPLACE, INSTALL NEW O-RING. HOLDING VENTURI FIRMLY IN PLACE, TAP LOCKING PIN IN FLUSH WITH HOUSING.

#### NOMENCLATURE

REF. NO.	REF. NO.
1. SCREW & LOCKWASHER (2) - ACTUATOR	40. NEEDLE & SEAT ASSY.
2. ACTUATOR - IDLE UP	41. FILTER SCREEN - NEEDLE SEAT
3. SPRING - AUX. THROTTLE RETURN	42. PUMP ASSY.
4. E-CLIP - SEC. DIAPHRAGM ROD	43. BOOT - PUMP
5. SCREW & LOCKWASHER (2) - SEC. DIAPHRAGM ASSY.	44. SCREW & LOCKWASHER (3) MIXTURE SOLENOID
6. SEC. DIAPHRAGM ASSY.	45. SOLENOID ASSY.
7. SCREW & LOCKWASHER - BRACKET	46. O-RING - SOLENOID (UPPER)
8. SCREW & LOCKWASHER - BRACKET	47. O-RING - SOLENOID (LOWER)
9. BRACKET - CABLE	48. GASKET - BOWL COVER
10. SCREW - PUMP LEVER	49. SPRING - PUMP RETURN
11. LEVER - PUMP	50. BALL - PUMP INTAKE CHECK
12. WASHER - PUMP LEVER SCREW	51. WEIGHT (2) - PUMP DISC BALL
13. LOCKWASHER - PUMP LEVER SCREW	52. SPRING - PUMP DISC BALL WEIGHT
14. SCREW & LOCKWASHER - BRACKET	53. BALL - PUMP DISCHARGE CHECK
15. SCREW & LOCKWASHER - BRACKET	54. JET - SLOW AIR BLEED
16. BRACKET - TERM HOLDER	55. JET - SLOW
17. SPRING - SWITCH RETURN (LONG)	56. JET - PRI. MAIN AIR BLEED
18. SPRING - SWITCH RETURN (SHORT)	57. JET - SEC. MAIN AIR BLEED
19. SCREW & LOCKWASHER (2) - BRACKET MICRO SWITCH	58. PLUG - SEC. SLOW JET
20. BRACKET & MICRO SWITCH ASSY.	59. JET - SEC. SLOW
21. GASKET - WINDOW LEVEL	60. SOLENOID ASSY. IDLE SHUT-OFF
22. WINDOW - LEVEL GAUGE	61. GASKET - SOLENOID
23. O-RING - WINDOW LEVEL GAUGE	62. SCREW & LOCKWASHER THROTTLE BODY
24. E-CLIP - CHOKE PULLOFF LINK	63. SCREW & LOCKWASHER (3) THROTTLE BODY
25. SCREW & LOCKWASHER - CHOKE PULLOFF	64. BOWL ASSY.
26. SCREW & LOCKWASHER - CHOKE PULLOFF	65. RETAINER - PLUG
27. CHOKE PULLOFF ASSY.	66. PLUG - PRI. MAIN JET
28. SCREW & LOCKWASHER (2) - THERMO ELEMENT	67. GASKET - PLUG
29. THERMO ELEMENT ASSY.	68. JET - PRI. MAIN
30. SCREW & LOCKWASHER (2) - BOWL VENT SOLENOID	69. PLUG - SEC. MAIN JET
31. BOWL VENT SOLENOID ASSY.	70. GASKET - PLUG
32. O-RING - BOWL VENT SOLENOID (INNER)	71. JET - SEC. MAIN
33. O-RING - BOWL VENT SOLENOID (OUTER)	72. VENTURI ASSY. - PRI.
34. SCREW & LOCKWASHER - FUEL FITTING BRACKET	73. LOCKING PIN - PRI. VENTURI
35. BRACKET - FUEL FITTING	74. O-RING - PRI. VENTURI SEAL
36. SCREW & LOCKWASHER (2) - BOWL COVER	75. VENTURI ASSY. - SEC.
37. PIN - FLOAT	76. LOCKING PIN - SEC. VENTURI
38. PIN - FLOAT	77. O-RING - SEC. VENTURI SEAL
39. FLOAT ASSY.	78. GASKET - THROTTLE BODY
	79. NEEDLE - IDLE ADJUSTING
	80. SPRING - IDLE NEEDLE
	81. WASHER - IDLE NEEDLE
	82. SEAL - IDLE NEEDLE
	83. THROTTLE BODY ASSY.

#### CLEANING

CLEANING MUST BE DONE WITH CARBURETOR DISASSEMBLED. CAUTION: DO NOT SOAK. USE A SPRAY TYPE CARBURETOR CLEANER TO CLEAN ALL THE PASSAGES OF THE CARBURETOR. MAKE CERTAIN THE THROTTLE BODY IS FREE OF ALL CARBON DEPOSITS. WASH OFF IN SUITABLE SOLVENT. BLOW OUT ALL PASSAGES IN CASTINGS WITH COMPRESSED AIR AND CHECK CAREFULLY TO INSURE THOROUGH CLEANING OF OBSCURE AREAS. DO NOT USE CLEANING SOLVENTS ON ASSEMBLIES SUCH AS (2), (6), (20), (27), (29), (31), (39), (45), (60) OR PARTS MADE OF RUBBER.

#### REASSEMBLY

REASSEMBLE IN REVERSE ORDER OF DISASSEMBLY. NOTE SPECIAL INSTRUCTIONS AND FOLLOW NUMERICAL OUTLINE IN MAKING ADJUSTMENTS NECESSARY FOR CARBURETOR BEING SERVICED.

#### SPECIAL INSTRUCTIONS

IDLE ADJUSTING NEEDLE (79) - TURN IN UNTIL LIGHTLY SEATED, THEN BACK OUT NUMBER OF TURNS RECORDED ON DISASSEMBLY.

PUMP RETURN SPRING (49) - INSTALL WITH CROSS WIRE TO THE BOTTOM OF PUMP CYLINDER.

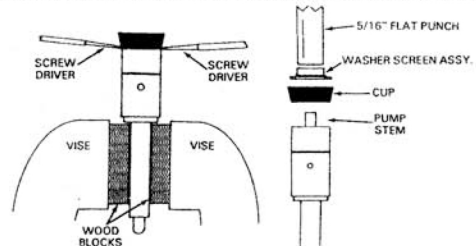
O-RING SEALS - LIGHTLY LUBRICATE FOR EASIER INSTALLATION OF SOLENOIDS.

FOLLOW SERVICE MANUAL INSTRUCTIONS TO MAKE FINAL ADJUSTMENTS ON CAR.

#### PUMP CUP SERVICE INSTRUCTIONS

PLACE PUMP STEM BETWEEN WOODEN BLOCKS AND CLAMP IN VISE. TAKE TWO SMALL BLADE SCREW DRIVERS AND INSERT UNDER CUP AND CAREFULLY PRY UP REMOVING CUP, INSERT WASHER AND SCREEN.

TO REPLACE: INSTALL CUP THEN PLACE INSERT WASHER AND SCREEN ASSEMBLY ON STEM. USING A 5/16" DIAMETER FLAT PUNCH AND HAMMER, LIGHTLY TAP ASSEMBLY IN PLACE. CAUTION: CUP SHOULD BE HELD FIRMLY IN PLACE. DO NOT OVER TIGHTEN.



# ADJUSTMENTS

